

Supra

Supra is designed to overcome multiple curved stairs with variable gradient. Supra is an inclined platform lift, advanced in design and ergonomics, created to meet the needs of customers, requiring the best in comfort and quality.

Because of its unique rail concept, Supra is suitable for installation in virtually any type of staircase, straight and curved. Supra's double rail concept is robust in design and double up as a handrail, making optimal use of space.

Its aluminium rails (RAL 9006) and accurate, detailed design make it unique. Exceptional engineering offers utmost reliability and safety under any conditions. Special anti-crush and anti-shearing devices stop the machine in the event of danger. The 'soft start and stop' feature means that you will arrive gently at upper and lower landings.



**ULTIMATE
LIFT**

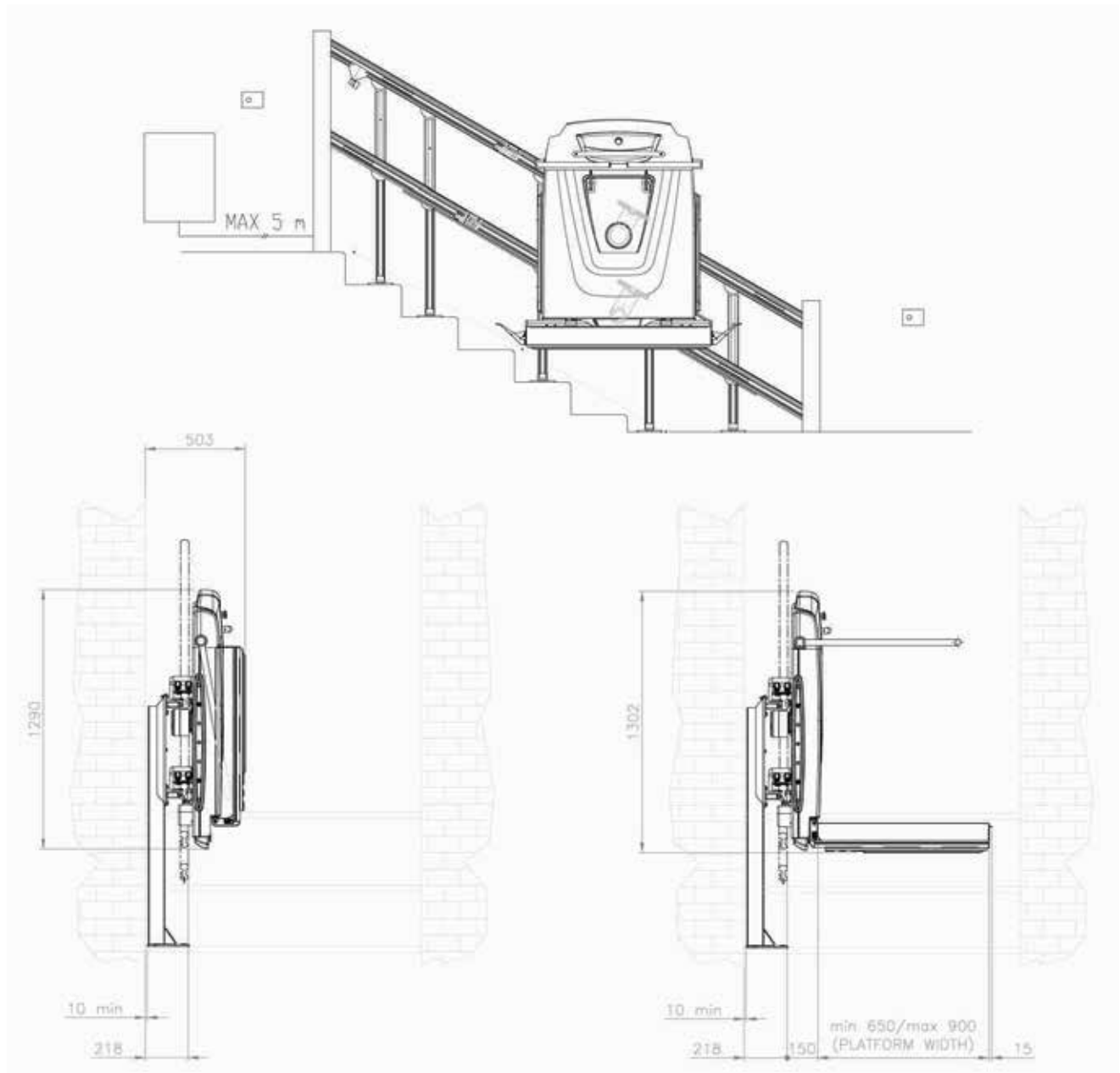
ULTIMATE LIFT CO., LTD.

1782 Debaratna Road, South Bangna, Bangna, Bangkok 10260 THAILAND

Tel: 088-321-7890

Email : sales@ultimatelift.co.th

Supra Dimensions



Technical Specifications

Rated load	:Maximum 300 kg
Speed	:0.07 m/s with 350 W motor 0.13 m/s with 700 W motor
Power	:0.75 kw (max)
Power supply	:230 Voc 50/60 Hz
Standard platforms (LxW)	:860 mm x 650 mm 860 mm x 710 mm 1050 mm x 850 mm 1250 mm x 850 mm (straight stairs)
Maximum travel	:40 m
Max angle of incline	:Up to 45
Norm compliance	:D.M.236/89; EN 81-40; Machine Drive 2006/42/EC
Certifications	:TUV CE

Options

- * Customized platform size
- * Motorized opening/closing platform
- * On wall remote control
- * Outdoor version
- * High speed (0.14 m/s) version
- * Anti-blackout device
- * Radio remote control
- * Mobile long side flap
- * Foldable seat
- * Cover cloth